

# Recombinant Protein L-Cys

Catalog #: 1004-03 Lot #: See label

**PrimeGene**<sup>™</sup>  
a biotechne brand

## Description

### Molecular Weight:

Approximately 40.6 kDa with a Cys on C-terminus, a single non-glycosylated polypeptide chain containing 366 amino acids. But it migrates with an apparent molecular mass of 46 kDa in SDS-PAGE.

### Source:

*Escherichia coli*.

### Quantity:

1mg/10mg/100mg/1g

### Protein per Gram Powder:\*

See Label.

### Concentration for 1 unity OD at 280 nm:

1.132 mg/ml

## Specification

### Physical Appearance:

Sterile Filtered White lyophilized (freeze-dried) powder.

### Purity:

> 96 % by SDS-PAGE and SEC-HPLC analyses.

### Specificity:

The recombinant Protein L is a genetically engineered protein containing 5 IgG-binding regions of protein L. Cell wall binding region, cell membrane binding region and albumin binding region have been

removed from the recombinant Protein L to ensure the maximum specific IgG binding. The recombinant Protein L is ideal for purification of polyclonal or monoclonal IgG antibodies. Protein L binds to human, mouse, rat and pig IgG.

### Endotoxin Level:

Less than 0.1 EU/μg of Protein L-Cys as determined by LAL method.

### Formulation:

Lyophilized from additive free solution.

## Usage Guide

### Stability & Storage:

- Use a manual defrost freezer and avoid repeated freeze-thaw cycles.
- 12 months from date of receipt, -20 to -70 °C as supplied.
- 1 month, 2 to 8 °C under sterile conditions after reconstitution.
- 3 months, -20 to -70 °C under sterile conditions after reconstitution.

### Reconstitution:

Dissolve in distilled water or saline.

### Shipping:

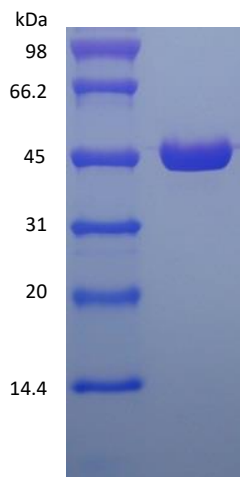
The product is shipped at ambient temperature. Upon receipt, store it immediately at -20 °C.

\*Masses of the protein and powder are not equal.

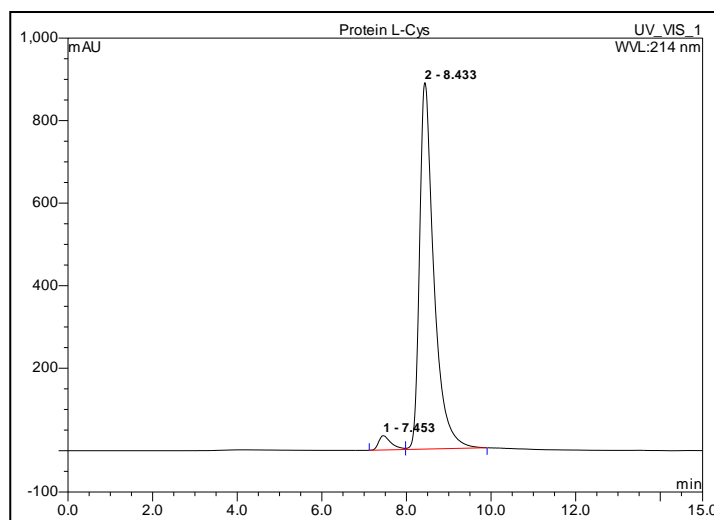
## Background

Recombinant Protein L contains 5 kappa-binding domain. Protein L has the unique ability to bind through kappa light chain interactions without interfering with the antibody's antigen-binding site. This gives Protein L the ability to bind a wider range of Ig classes and subclasses than other antibody-binding proteins.

## SDS-PAGE



## SEC-HPLC



Rev. 09/19/2023 V.3

Manufactured By Shanghai PrimeGene Bio-Tech Co., Ltd.

**FOR RESEARCH USE ONLY. NOT FOR HUMAN USE.**

Website: [www.primegene.com](http://www.primegene.com)

Email: [info.pg@bio-techne.com](mailto:info.pg@bio-techne.com)

Tel: +86-21-52380373

Fax: +86-21-61077348