

Recombinant Cys-Protein A/G

Catalog #: 1003-03 Lot #: See label

PrimeGene[™]
a biotechne brand

Description

Molecular Weight:

Approximately 47.8 kDa with a Cys on N-terminus, a single non-glycosylated polypeptide chain containing 430 amino acids.

Source:

Escherichia coli.

Quantity:

1mg/5mg/100mg/1g

Protein per Gram Powder:*

See Label.

Concentration for 1 unity OD at 280 nm:

1.737 mg/ml

Specification

Physical Appearance:

Sterile Filtered White lyophilized (freeze-dried) powder.

Purity:

> 96 % by SDS-PAGE and RP-HPLC analyses.

Specificity:

The recombinant Protein A/G is a genetically engineered protein containing 5 IgG-binding regions of protein A and 2 of protein G. Cell wall binding region, cell membrane binding region and albumin binding region have been removed from the recombinant Protein A/G to ensure the maximum specific IgG binding. The recombinant

Protein A/G is ideal for purification of polyclonal or monoclonal IgG antibodies. Protein A/G binds to various human, mouse and rat IgG subclasses (e.g., human IgG1, IgG2, IgG3, IgG4; mouse IgG2a, IgG2b, IgG3; rat IgG2a, IgG2c). It also binds to total IgG from cow, goat, sheep, house, rabbit, guinea pig, pig, dog and cat.

Endotoxin Level:

Less than 0.1 EU/μg of Cys-Protein A/G as determined by LAL method.

Formulation:

Lyophilized from additive free solution.

Usage Guide

Stability & Storage:

- Use a manual defrost freezer and avoid repeated freeze-thaw cycles.
- 12 months from date of receipt, -20 to -70 °C as supplied.
- 1 month, 2 to 8 °C under sterile conditions after reconstitution.
- 3 months, -20 to -70 °C under sterile conditions after reconstitution.

Reconstitution:

Dissolve in distilled water or saline.

Shipping:

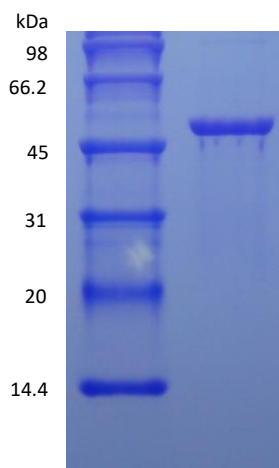
The product is shipped at ambient temperature. Upon receipt, store it immediately at -20 °C.

*Masses of the protein and powder are not equal.

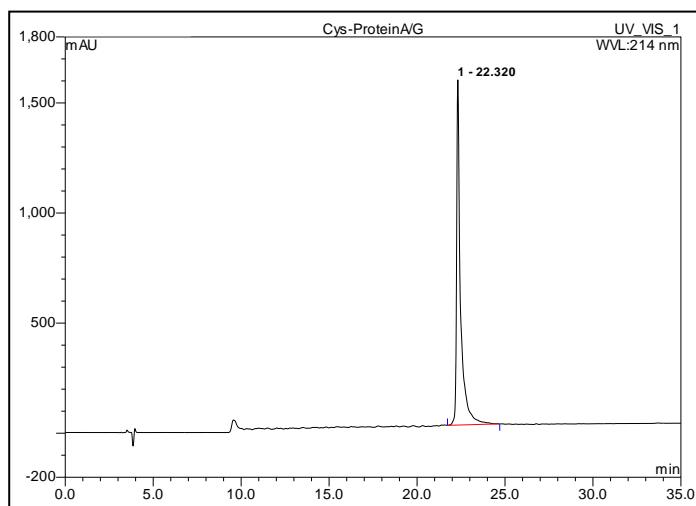
Background

The recombinant Protein A/G consists of 7 IgG-binding domains EDABC-C1C3, which corresponds to the Protein A and G domains that are included in the recombinant sequence. The Protein A portion is from *Staphylococcus aureus* segments E, D, A, B and C. The Protein G portion is from *Streptococcus* segments C1 and C3. The binding capacity of recombinant Protein A/G is broader than either Protein A or Protein G alone.

SDS-PAGE



RP-HPLC



Rev. 09/19/2023 V.3

Manufactured By Shanghai PrimeGene Bio-Tech Co., Ltd.

FOR RESEARCH USE ONLY. NOT FOR HUMAN USE.